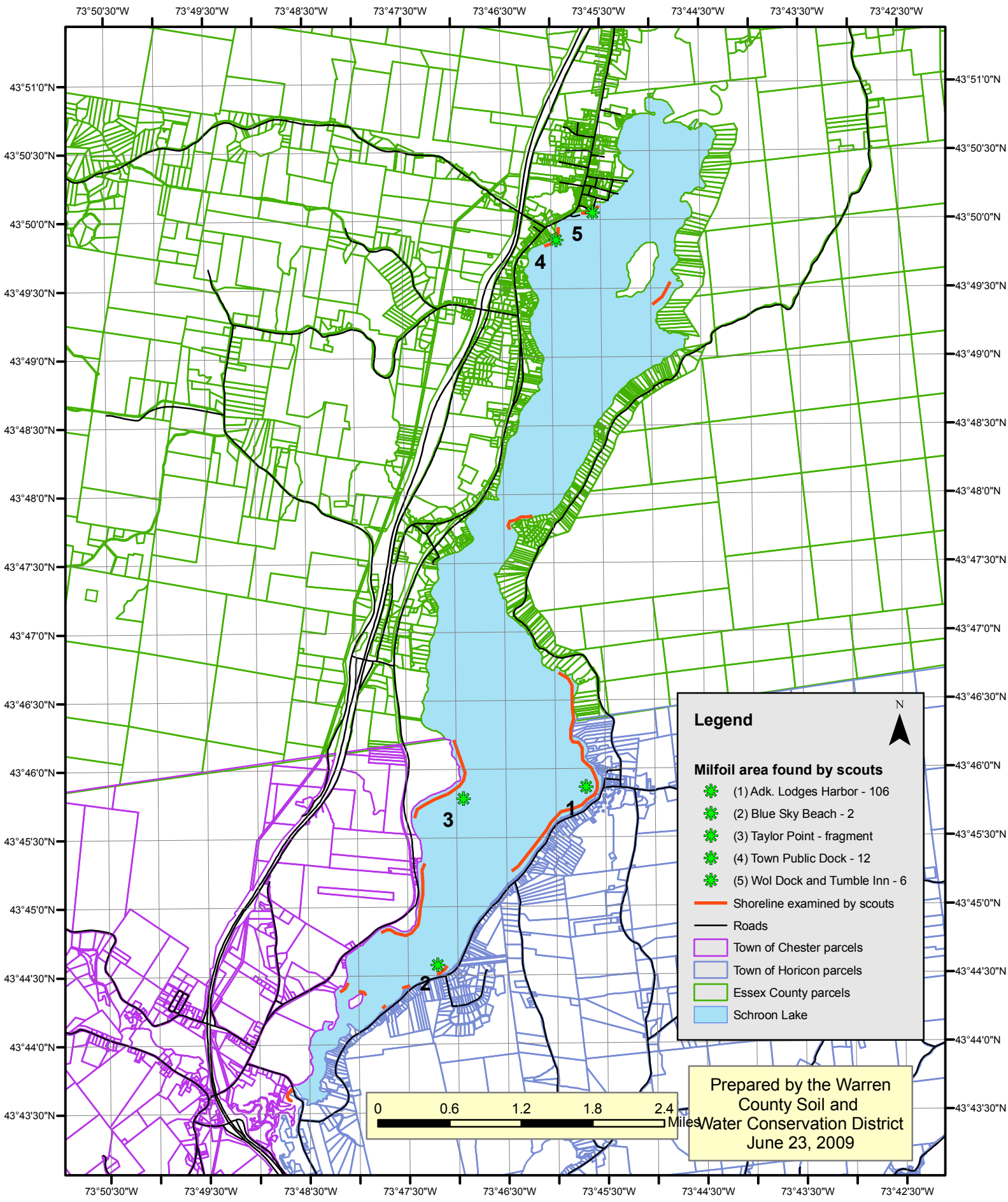
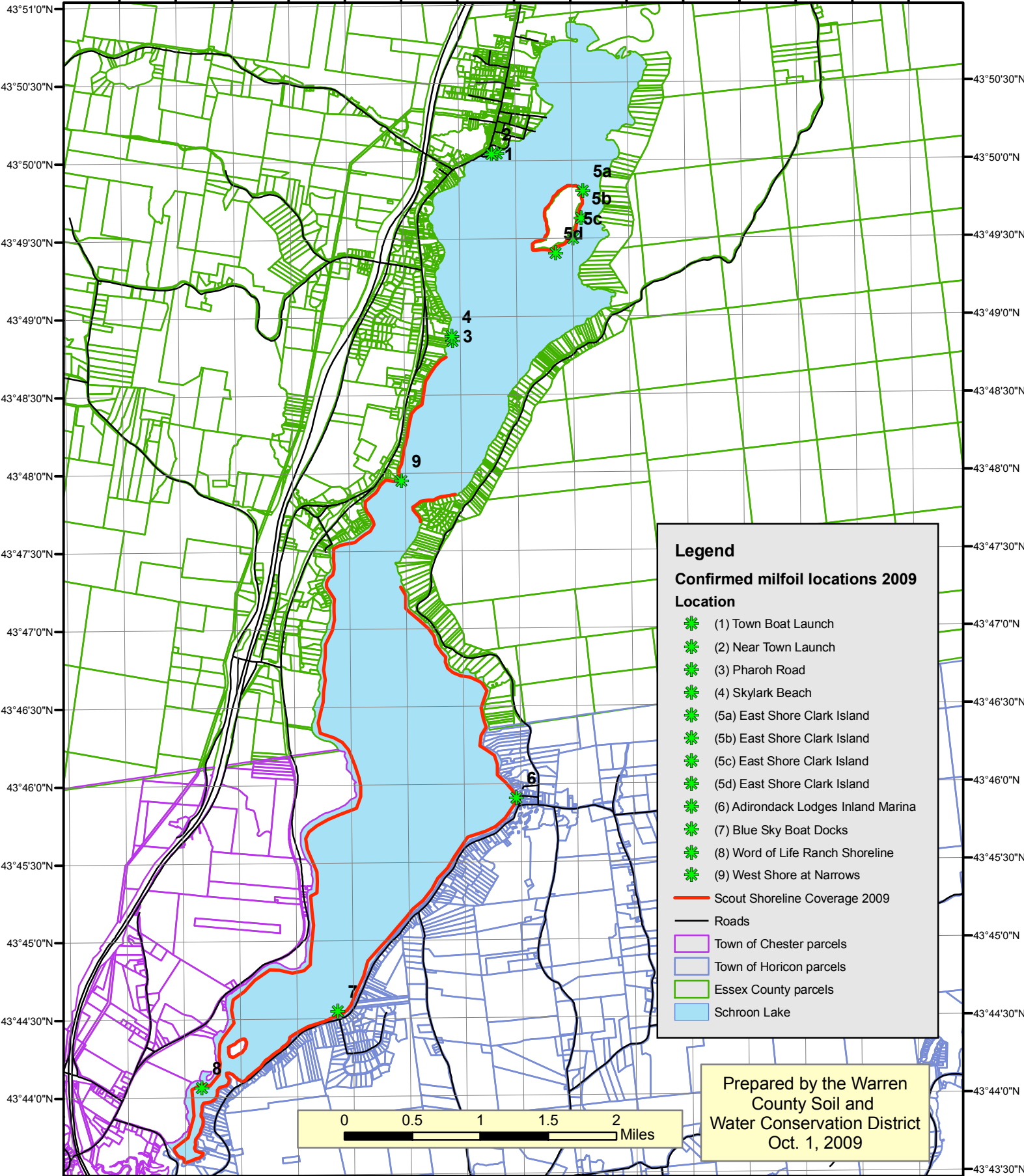


Schroon Lake Milfoil Scout Program 2008, Map #1



Schroon Lake Milfoil Scout Program Oct. 1, 2009 Map #2

73°49'0"W 73°48'30"W 73°48'0"W 73°47'30"W 73°47'0"W 73°46'30"W 73°46'0"W 73°45'30"W 73°45'0"W 73°44'30"W 73°44'0"W 73°43'30"W 73°43'0"W 73°42'30"W 73°42'0"W

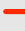
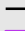



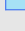


Legend

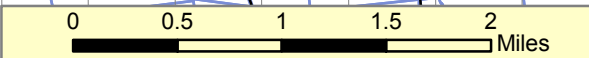
Confirmed milfoil locations 2009

Location

-  (1) Town Boat Launch
-  (2) Near Town Launch
-  (3) Pharaoh Road
-  (4) Skylark Beach
-  (5a) East Shore Clark Island
-  (5b) East Shore Clark Island
-  (5c) East Shore Clark Island
-  (5d) East Shore Clark Island
-  (6) Adirondack Lodges Inland Marina
-  (7) Blue Sky Boat Docks
-  (8) Word of Life Ranch Shoreline
-  (9) West Shore at Narrows

-  Scout Shoreline Coverage 2009
-  Roads
-  Town of Chester parcels
-  Town of Horicon parcels
-  Essex County parcels
-  Schroon Lake

Prepared by the Warren
County Soil and
Water Conservation District
Oct. 1, 2009



73°49'30"W 73°49'0"W 73°48'30"W 73°48'0"W 73°47'30"W 73°47'0"W 73°46'30"W 73°46'0"W 73°45'30"W 73°45'0"W 73°44'30"W 73°44'0"W 73°43'30"W 73°43'0"W 73°42'30"W 73°42'0"W